

CONTRACOR®

Authorized Dealer

Fri Stråleanlæg



Kemi og Maskinløsninger

CONTRACOR[®]
CORROSION CONTROL



CATALOGUE # 8.3

**PORTABLE
ABRASIVE BLASTING EQUIPMENT**



Du har emnerne - PERS GROUP har kemi og maskinløsningerne



part # 1

PORTABLE ABRASIVE BLASTING EQUIPMENT PACKAGES

Blast Machine and Safety Equipment Packages



* Pictured above:
BlastPack-200,
SafePack-Aspect

Order Code	Model	Description
10110011	BlastPack-25	DBS-25RC, 5m Twinline, 5m ExtraBlast-13, NHP-0, CQP-0, NTC-5.0
10110012	BlastPack-50	DBS-50RC, 5m Twinline, 5m ExtraBlast-13, NHP-0, CQP-0, NTC-5.0
10110013	BlastPack-100	DBS-100RC, 20m Twinline, 20m ExtraBlast-25, NHP-1, CQP-1, RTC-6.5
10110014	BlastPack-200*	DBS-200RC, 20m Twinline, 20m ExtraBlast-32, NHP-2, CQP-2, RTC-9.5
10130905	SafePack-Comfort	Comfort, BAF, 20m BAH, Overall 54 size incl. leather Gloves
10130906	SafePack-Aspect*	Aspect, BAF, 20m BAH, Overall 54 size incl. leather Gloves, 1 pack. disposable lences (50 pcs).

Our blasting machine and safety equipment packages are equipped with all necessary fittings, connections, washers, etc. A complete blasting machine and safety equipment package will be mounted on a wooden pallet upon delivery.

Blasting machine Packages

Order code	Model	BlastPack-25	BlastPack-50	BlastPack-100	BlastPack-200	Description
10110510	DBS-25RC	■				Abrasive Blasting Machine with RC, 25 liters
10110515	DBS-50RC		■			Abrasive Blasting Machine with RC, 50 liters
10110301	DBS-100RC			■		Abrasive Blasting Machine with RC, 100 liters
10110401	DBS-200RC				■	Abrasive Blasting Machine with RC, 200 liters
10112110	ExtraBlast-13	■	■			Abrasive Blast Hoses 13x27, roll 5m
10112113	ExtraBlast-25			■		Abrasive Blast Hoses 25x39, roll 20m
10112114	ExtraBlast-32				■	Abrasive Blast Hoses 32x48, roll 20m
10112309	CQP-0	■	■			Nylon hose coupling, for hose diameter 13 x 27 mm
10112301	CQP-1			■		Nylon hose coupling, for hose diameter 25 x 39 mm
10112302	CQP-2				■	Nylon hose coupling, for hose diameter 32 x 48 mm
10112209	NHP-0	■	■			Nylon nozzle holder, for hose diameter 13 x 27 mm
10112201	NHP-1			■		Nylon nozzle holder, for hose diameter 25 x 39 mm
10112202	NHP-2				■	Nylon nozzle holder, for hose diameter 32 x 48 mm
10112551	NTC-5,0	■	■			Venturi nozzle, tungsten carbide, 5.0 mm x 45 mm
10112062	RTC-6,5			■		Venturi nozzle, tungsten carbide, 6.5 mm x 130 mm
10112064	RTC-9,5				■	Venturi nozzle, tungsten carbide, 9.5 mm x 170 mm

Safety equipment Packages

Order code	Model	SafePack Comfort	SafePack Aspect	Description
10130000	Comfort	■		Blast Helmet, durable nylon cape
10130600	Aspect		■	Blast Helmet, durable nylon cape
10130602			■	Disposable lenses, pack 50 pcs
10130400	BAF	■	■	Breathing Air Filter, 2 Outputs
10130909	BAH	■	■	Breathing air hose 9 mm x 15 mm, 20 m. Roll incl. fittings
10130702	Size 54 (L)	■	■	Heavy-Duty Blast Overall, Leather / Cotton, incl. gloves

Our blasting machine and safety equipment packages are equipped with all necessary fittings, connections, washers, etc. A complete blasting machine and safety equipment package will be mounted on a wooden pallet upon delivery.



part # 2

PORTABLE ABRASIVE BLASTING MACHINES AND MACHINE SPARES

Abrasive Blasting Machines



FIELD OF APPLICATION

Abrasive blasting of metal constructions and buildings, bridges, reservoirs, piping, concrete surfaces. Cleaning up to grade SA-3.0.

Performance up to 37 m²/h (see Table of Performance).

DESIGNED TO WORK WITH

any dry abrasives, max. grain size 4 mm.

Technical data:	DBS-25RC	DBS-50RC	DBS-100 DBS-100RC DBS-100RCS	DBS-200 DBS-200RC DBS-200RCS
Max. working pressure, bar	10	10	10	10
Vessel capacity, liter	25	50	100	200
Working temperature, °C	-10 — +50	-10 — +50	-10 — +50	-10 — +50
Vessel diameter, mm	306	415	508	609
Vessel height, mm	960	1180	1226	1480
Weight, kg	46	73	105 / 110 / 110	135 / 140 / 140

Compressed air consumption (m³/min)

Nozzle Diameter	Abrasive blasting	Plus hood	Plus 50% reserve	Minimum air input
6,5 MM	2,3	0,5	1,4	4,2
8,0 MM	3,9	0,5	2,2	6,6
9,5 MM	5,5	0,5	3,0	9,0
11,0 MM	7,2	0,5	3,9	11,6
12,5 MM	9,6	0,5	5,0	16,1

Table of Performance

Nozzle Diameter, mm:		6,5	8	9,5	11	12,5
Compressed air output, m ³ /min., at 8 bar pressure		4,2	6,6	9	11,6	16,1
Average output, m ² /h	SA 2	10	15	21	28	37
	SA 2 ¹ / ₂	5	9	14	21	28
	SA 3	4	6	9	13	17
Average abrasive consumption, kg/m	SA 2	40	35	32	29	28
	SA 2 ¹ / ₂	58	51	46	42	40
	SA 3	78	68	62	56	54

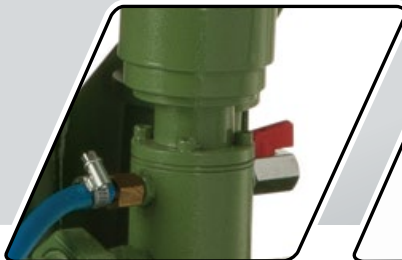


DBS-25RC, DBS-50 RC
(with remote control)

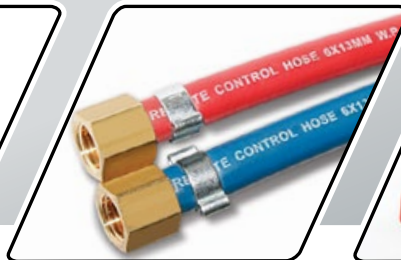


OIL-MOISTURE
SEPARATOR CAF-0*

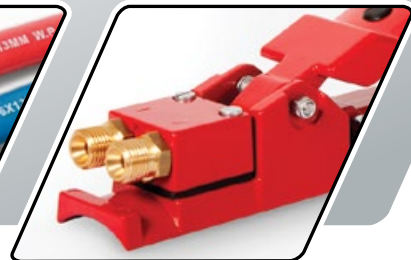
RC Valve RCV-0



TWINLINE hose



Deadman handle



Standard delivery:

DBS-25 RC (with remote control)		DBS-50 RC (with remote control)
<ul style="list-style-type: none"> - 25-liter capacity tank - screen - cap - sand valve FSV-0 - high-performance moisture separator CAF-0 - quick hose couplings CFT-0 - remote control device with a pneumatically-operated RC main valve, deadman handle, 5-meter twin-line hose, hose fittings 		<ul style="list-style-type: none"> - 50-liter capacity tank - screen - cap - sand valve FSV-0 - high-performance moisture separator CAF-0 - quick hose couplings CFT-0 - remote control device with a pneumatically-operated RC main valve, deadman handle, 5-meter twin-line hose, hose fittings
Order code	Model	Description
10110510	DBS - 25 RC	Abrasive Blasting Machine with RC, 25 liters. Complete package incl. DMH and 5m Twinline hose with fittings.
10110515	DBS - 50 RC	Abrasive Blasting Machine with RC, 50 liters. Complete package incl. DMH and 5m Twinline hose with fittings.



DBS-100, DBS-200

OIL-MOISTURE SEPARATOR CAF-3

All Contracor abrasive blasting machines are equipped on standard delivery with a highly efficient CAF moisture separator to prevent the entry of moisture and oil from the compressor into the tank. This is especially necessary when using old compressors, or working at low temperatures or at a large distance from the compressor.

The CAF filter eliminates up to 98% of the condensate and oil from compressed air. This prevents work stoppages in connection with the removal of dampened abrasive from the tank.

Standard delivery:

DBS-100		DBS-200
- 100 liter capacity tank		- 200 liter capacity tank
- screen		- screen
- cap		- cap
- sand valve		- sand valve
- high-performance moisture separator		- high-performance moisture separator
- inspection door		- inspection door
- quick hose couplings		- quick hose couplings
Order code	Model	Description
10110100	DBS-100	Abrasive Blasting Machine, 100 liters
10110200	DBS-200	Abrasive Blasting Machine, 200 liters

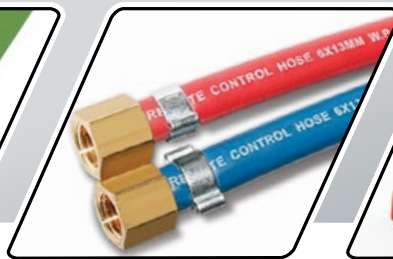


**DBS-100 RC, DBS-200 RC
(with remote control)**

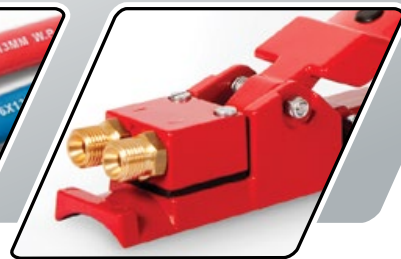
RC Valve RCV



TWINLINE hose



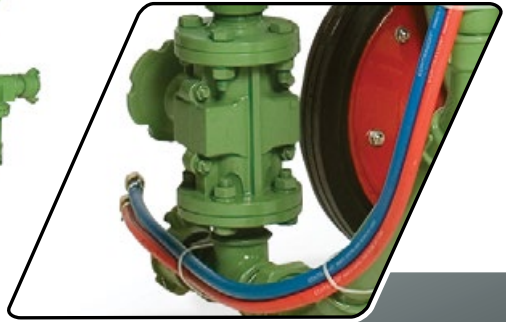
Deadman handle



Standard delivery:

DBS-100 RC (with remote control)		DBS-200 RC (with remote control)
<ul style="list-style-type: none"> - 100-liter capacity tank - screen - cap - sand valve - high-performance moisture separator - inspection door - quick hose couplings CFT - remote control device with a pneumatically-operated RC main valve, deadman handle, 20-meter twin-line hose, hose fittings 		<ul style="list-style-type: none"> - 200-liter capacity tank - screen - cap - sand valve - high-performance moisture separator - inspection door - quick hose couplings CFT - remote control device with a pneumatically-operated RC main valve, deadman handle, 20-meter twin-line hose, hose fittings
Order code	Model	Description
10110301	DBS - 100 RC	Abrasive Blasting Machine with RC, 100 liters. Complete package incl. DMH and 20m Tinline hose with fittings.
10110401	DBS - 200 RC	Abrasive Blasting Machine with RC, 200 liters. Complete package incl. DMH and 20m Tinline hose with fittings.

DBS-100 RCS, DBS-200 RCS (with remote control and SGV valve)



Special valve for steel abrasives SGV

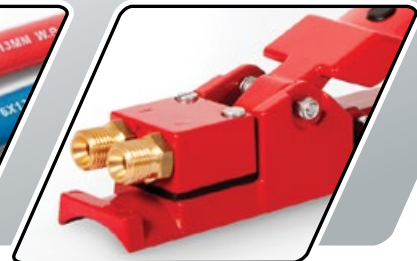
RC Valve RCV



TWINLINE hose



Deadman handle



Standard delivery:

Order code	Model	Description
10110406	DBS - 100 RCS	Steel abrasives Blasting Machine with RC, 100 liters. Complete package incl. DMH and 20m Twinline hose with fittings.
10110411	DBS - 200 RCS	Steel abrasives Blasting Machine with RC, 200 liters. Complete package incl. DMH and 20m Twinline hose with fittings.

FSV Metering Valve



The Contracor FSV flow control valve is designed for the precise metering of abrasive into the compressed air flow at the outlet of a blast machine.

Design features

The 45° inclined FSV valve design affords uniform mixture of air and abrasive. The valve's durable control disks provide precise metering of an abrasive quantity. The service port allows the valve to be cleared of clogging. The Contracor FSV flow control valve is designed for working with mineral abrasives (slag).

Order code	Model	Description
10110850	FSV	FSV Flow control valve 1.1/4"

SVG Metering Valve, Rubber Pipe For SVG Valve



The Contracor SVG flow control valve is designed for the precise metering of abrasive into the compressed air flow at the outlet of a blast machine.

Design features

The SVG valve is used for metering heavy or aggressive abrasive materials, such as steel shot and grit or aluminium oxide. The SVG design prevents the valve body from coming into contact with the abrasive stream. The abrasive stream only touches the rubber pipe, which may be quickly replaced when worn. The abrasive is metered by means of constricting the rubber pipe by a metering screw.

Order code	Model	Description
10110860	SVG	SVG flow control valve for heavy or aggressive materials
29000038		Rubber pipe for SVG valve, spare part

**Remote Control System
For Blast Vessels**



The remote control system is used by a single abrasive blasting operator for starting up and shutting down the blast machine. The remote control system comprises a remote control RCV valve and remote control DMH handle, which are connected by a twin hose.

RCV remote control valve

The RCV remote control valve is used for controlling the compressed air feed to the machine while simultaneously controlling air blow-out from the machine. Both control functions run concurrently when the DMH handle is pressed or released by the abrasive blasting operator. Air is bled from the tank via a damper, which is included in the delivery set.

DMH remote control handle

The DMH remote control handle is fastened to the nozzle and connected to the RCV remote control valve using a dual hose.

Design features

The RCV remote control valve responds when the DMH handle is pressed. The blast machine's tank is pressurized and the abrasive blast cleaning process begins. When the DMH handle is released, the RCV remote control valve closes, the abrasive blast cleaning process terminates and the machine's tank depressurizes.

Order code	Model	Description
10110870	RCV	RCV Remote control valve 1.1/4"
10110880	DMH	DMH Remote control handle

Blast Machine Spares DBS / DBS-RC / DBS-RCS



Order code	Description	DBS	DBS-RC	DBS-RCS
10110930	Moisture separator 1 1/4", CAF-3	■	■	■
10110960	Pop-up valve, rubber	■	■	■
10110950	O-Ring, rubber	■	■	■
10110900	Sandblast coupling 1 1/4, CFT	■	■	■
10110980	Rubber gasket for CFT/CQT, spare part			

Rubberized Fittings For Blast Machines DBS / DBS-RC / DBS-RCS



Order code	Description	DBS	DBS-RC	DBS-RCS
10110990	Y-piece 45° 1 1/4" rubberized	■	■	
10110911	Nipple 1 1/4" rubberized	■	■	■
10110921	Pipe 1 1/4" (100mm) rubberized	■	■	
10110948	T-piece, 90°, 1 1/4" (FFF), rubberized			■



part # 3

HOSES FOR ABRASIVE BLASTING, REMOTE CONTROL HOSES



Blasting Hoses EXTRA BLAST



ABRASION RESISTANCE
According to DIN 53516:
Max. 60 mm³
Avg. 52 mm³.

TUBE

Black conductive NR – abrasion resistant.

REINFORCEMENT

High tensile textile cords.

COVER

Black conductive SBR/NR blend – abrasion and ozone resistant – pin pricked.

TEMPERATURE

-30°C +80°C.

NOTE

Tolerances according to "RMA" class 311-A.

SAFETY FACTOR 3:1.

Order code	Model	Description
10112110	ExtraBlast-13	Abrasive Blast Hoses 13x27, roll 5m
10112111	ExtraBlast-13	Abrasive Blast Hoses 13x27, roll 20m
10112109	ExtraBlast-13	Abrasive Blast Hoses 13x27, roll 40m
10112112	ExtraBlast-19	Abrasive Blast Hoses 19x33, roll 20m
10112100	ExtraBlast-19	Abrasive Blast Hoses 19x33, roll 40m
10112113	ExtraBlast-25	Abrasive Blast Hoses 25x39, roll 20m
10112101	ExtraBlast-25	Abrasive Blast Hoses 25x39, roll 40m
10112114	ExtraBlast-32	Abrasive Blast Hoses 32x48, roll 20m
10112102	ExtraBlast-32	Abrasive Blast Hoses 32x48, roll 40m

Remote Control Hoses TWINLINE



Order code	Model	Description
10112105		Remote control hose, d=6 mm, mounted with fittings, roll 5m
10112106		Remote control hose, d=6 mm, mounted with fittings, roll 20m
10112103		Remote control hose, d=6 mm, mounted with fittings, roll 40m



part # 4

**BLAST HOSE COUPLINGS,
SAFETY CABLES**

Nozzle Holders, Nylon



Material: nylon.
Thread 50 mm –
suitable for the tread of
CONTRACOR® nozzles.

For abrasive blasting hoses with. Equipped with a rubber washer and screws.

Order code	Model	Description
10112209	NHP-0	Nylon nozzle holder, for hose diameter 13 x 27 mm
10112200	NHP-3/4	Nylon nozzle holder, for hose diameter 19 x 33 mm
10112201	NHP-1	Nylon nozzle holder, for hose diameter 25 x 39 mm
10112202	NHP-2	Nylon nozzle holder, for hose diameter 32 x 48 mm

Order code	Description
10112208	Rubber gasket for NHP-0
10112207	Rubber gasket for NHP-3/4
10112203	Rubber gasket for NHP-1
10112204	Rubber gasket for NHP-2

Blast Hose Quick Couplings



CQP material: nylon.
CQT material: metal.

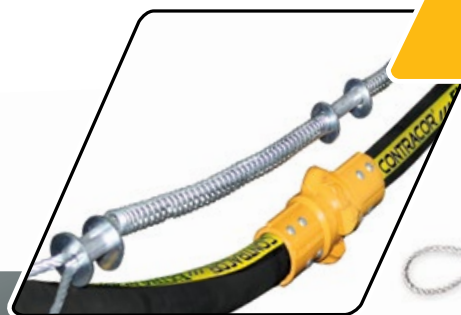
For abrasive blasting hoses with. Compatible with hose couplings CFT on CONTRACOR® abrasive blasting machines. Delivery: rubber washer, screws, safety clip.

Order code	Model	Description
10112309	CQP-0	Nylon hose coupling, for hose diameter 13 x 27 mm
10112300	CQP-3/4	Nylon hose coupling, for hose diameter 19 x 33 mm
10112301	CQP-1	Nylon hose coupling, for hose diameter 25 x 39 mm
10112302	CQP-2	Nylon hose coupling, for hose diameter 32 x 48 mm

Order code	Model	Description
10112319	CQT-0	Malleable iron hose couplings, zinc plated, yellow passivated, for hose diameter 13 x 27 mm
10112311	CQT-1	Malleable iron hose couplings, zinc plated, yellow passivated, for hose diameter 25 x 39 mm
10112312	CQT-2	Malleable iron hose couplings, zinc plated, yellow passivated, for hose diameter 32 x 48 mm

Order code	Description
10110981	Rubber gasket for CQP-0 / CQT-0 / CFT-0
10112307	Rubber gasket for CQP-3/4
10112303	Rubber gasket for CQP-1 / CQP-2
10110980	Rubber gasket for CQT-1 / CQT-2 / CFT-1

Hose Safety Cables



Corrosion resistant steel cables with plated springs and aluminium ferrules



Instructions of use:

Attach blast hose safety cables at all coupled connections. Before connecting the couplings, pull back the spring-loaded loop, slip it over the blast hoses only (not the remote control lines). Connect the hose coupling and slide the ends of the safety cable back until the cable is straight and the hose is slightly bent.

Contracor® blast hose Whipcheck Safety Cables are used at all blast hoses for the safe holding of coupled connections in case of accidental separation. The Whipcheck Safety Cables relieve the couplings of the weight of the hose and reduce the danger caused by hose couplings failure. The Cables also help keeping the blast hose from whipping about in the event of a coupling failure. Hose couplings may separate from air and blast hoses for a variety of reasons:

- Coupling screws may lose their holding power due to internal wear on the hose tubing
- Use of improper coupling screws may interfere with the proper fit between couplings and hose
- Hose outer diameter may be too small for the coupling
- The continual strain caused by pulling hoses around job sites can weaken the coupling's grip on the hose
- Couplings can also have been damaged by vehicles or other equipment.

Whipcheck Safety Cables are strongly recommended by vertical applications, when air and blast hoses are suspended. Hose couplings are not designed to support the weight of the hose. Additional supports are required to relieve the added tension. Constructed of corrosion resistant, high strength steel, Whipcheck Safety Cables may be installed on hose-to-hose and hose-to-fixed coupling connections.

Order code	Description
10112321	Safety Cables up to 1" I.D.
10112322	Safety Cables 1.1/4" – 3" I.D.



part # 5

BLAST NOZZLES

Blast nozzles PERFORMER



abrasive blast nozzles
made from high-quality
tungsten carbide (TC).

Nozzles PERFORMER 400

Performer is the latest development of high performance Venturi blast cleaning nozzles. New modern and highly wear resistant liners are equipped with a rugged and lightweight polyurethane jacket. Whether blasting with high aggressive Fused Aluminas, Silicon Carbides and Steel Grits or blasting with Expendable slag-based abrasives - in Contracor Performer nozzles range you will find the best suitable nozzle for your application. Performer nozzles are available in five sizes to achieve maximum productivity of abrasive blast cleaning system. You can select correct nozzle bore to suit compressed air supply and optimize blast media consumption.

Wear-resistant Venturi blasting nozzles made of tungsten carbide (TC). Service life: up 400 h.
Cover: Polyurethane. Thread: Aluminum, 50 mm for NHP nozzle holder. Entry size: 32 mm.

Order code	Model	Description
10113062	Performer 400 x 6.5	Venturi nozzle, tungsten carbide, 6.5 mm x 130 mm
10113063	Performer 400 x 8.0	Venturi nozzle, tungsten carbide, 8.0 mm x 150 mm
10113064	Performer 400 x 9.5	Venturi nozzle, tungsten carbide, 9.5 mm x 170 mm
10113065	Performer 400 x 11.0	Venturi nozzle, tungsten carbide, 11.0 mm x 200 mm
10113066	Performer 400 x 12.5	Venturi nozzle, tungsten carbide, 12.5 mm x 210 mm



abrasive blast nozzles
made from high-quality
silicon carbide (SiC).

Nozzles PERFORMER 600

Performer is the latest development of high performance Venturi blast cleaning nozzles. New modern and highly wear resistant liners are equipped with a rugged and lightweight polyurethane jacket. Whether blasting with high aggressive Fused Aluminas, Silicon Carbides and Steel Grits or blasting with Expendable slag-based abrasives - in Contracor Performer nozzles range you will find the best suitable nozzle for your application. Performer nozzles are available in five sizes to achieve maximum productivity of abrasive blast cleaning system. You can select correct nozzle bore to suit compressed air supply and optimize blast media consumption.

Wear-resistant Venturi blasting nozzles made of silicon carbide (SiC). Service life: up 600 h.
Cover: Polyurethane. Thread: Aluminum, 50 mm for NHP nozzle holder. Entry size: 32 mm.

Order code	Model	Description
10113072	Performer 600 x 6.5	Venturi nozzle, silicon carbide, 6.5 mm x 130 mm
10113073	Performer 600 x 8.0	Venturi nozzle, silicon carbide, 8.0 mm x 150 mm
10113074	Performer 600 x 9.5	Venturi nozzle, silicon carbide, 9.5 mm x 170 mm
10113075	Performer 600 x 11.0	Venturi nozzle, silicon carbide, 11.0 mm x 200 mm
10113076	Performer 600 x 12.5	Venturi nozzle, silicon carbide, 12.5 mm x 210 mm



abrasive blast nozzles
made from high-quality
boron carbide (B4C).

Nozzles PERFORMER 1000

Performer is the latest development of high performance Venturi blast cleaning nozzles. New modern and highly wear resistant liners are equipped with a rugged and lightweight polyurethane jacket. Whether blasting with high aggressive Fused Aluminas, Boron Carbides and Steel Grits or blasting with Expendable slag-based abrasives - in Contracor Performer nozzles range you will find the best suitable nozzle for your application. Performer nozzles are available in five sizes to achieve maximum productivity of abrasive blast cleaning system. You can select correct nozzle bore to suit compressed air supply and optimize blast media consumption.

Wear-resistant Venturi blasting nozzles made of boron carbide (B4C). Service life: up 1000 h.
Cover: Polyurethane. Thread: Aluminum, 50 mm for NHP nozzle holder. Entry size: 32 mm.

Order code	Model	Description
10113082	Performer 1000 x 6.5	Venturi nozzle, boron carbide, 6.5 mm x 130 mm
10113083	Performer 1000 x 8.0	Venturi nozzle, boron carbide, 8.0 mm x 150 mm
10113084	Performer 1000 x 9.5	Venturi nozzle, boron carbide, 9.5 mm x 170 mm
10113085	Performer 1000 x 11.0	Venturi nozzle, boron carbide, 11.0 mm x 200 mm
10113086	Performer 1000 x 12.5	Venturi nozzle, boron carbide, 12.5 mm x 210 mm

Blast Nozzles CLASSIC TC Venturi Type



abrasive blast nozzles
made from high-quality
tungsten carbide (TC).

Nozzles type RTC

Wear-resistant Venturi blasting nozzles made of tungsten carbide (TC).

Venturi bore nozzles produce a wide blast pattern and intensify abrasive velocity as much as 100% per given pressure. Venturi nozzles are the best option for increased productivity when blasting larger areas. Long Venturi style nozzles provide approximately a 40% increase in productivity in comparison with straight bore nozzles. Additionally, abrasive consumption can be reduced by about 40%.

Service life: up 400 h. Cover: Rubber. Thread: Rubber, 50 mm for NHP nozzle holder. Entry size: 32 mm.

Order code	Model	Description
10112062	RTC-6.5	Venturi nozzle, tungsten carbide, 6.5 mm x 130 mm
10112063	RTC-8.0	Venturi nozzle, tungsten carbide, 8.0 mm x 150 mm
10112064	RTC-9.5	Venturi nozzle, tungsten carbide, 9.5 mm x 170 mm
10112065	RTC-11.0	Venturi nozzle, tungsten carbide, 11.0 mm x 200 mm
10112066	RTC-12.5	Venturi nozzle, tungsten carbide, 12.5 mm x 210 mm

Nozzles type CTC

Wear-resistant Venturi blasting nozzles made of tungsten carbide (TC).

Venturi bore nozzles produce a wide blast pattern and intensify abrasive velocity as much as 100% per given pressure. Venturi nozzles are the best option for increased productivity when blasting larger areas. Long Venturi style nozzles provide approximately a 40% increase in productivity in comparison with straight bore nozzles. Additionally, abrasive consumption can be reduced by about 40%.

Service life: up 400 h. Cover: Aluminum / rubber. Thread: Aluminum, 50 mm for NHP nozzle holder.

Entry size: 32 mm.

Order code	Model	Description
10112542	CTC-6.5	Venturi nozzle, tungsten carbide, 6.5 mm x 130 mm
10112543	CTC-8.0	Venturi nozzle, tungsten carbide, 8.0 mm x 150 mm
10112544	CTC-9.5	Venturi nozzle, tungsten carbide, 9.5 mm x 170 mm
10112545	CTC-11.0	Venturi nozzle, tungsten carbide, 11.0 mm x 200 mm
10112546	CTC-12.5	Venturi nozzle, tungsten carbide, 12.5 mm x 210 mm

Nozzles type DVTC

Wear-resistant Double Venturi blasting nozzles made of tungsten carbide (TC).

The double Venturi style can be regarded as two nozzles in a row with a gap and holes in between to facilitate the entry of atmospheric air into the downward part of the nozzle. The exit segment is also wider than an ordinary nozzle. This modification increases the size of the blast pattern and minimizes a reduction in abrasive velocity.

Service life: up 400 h. Cover: Aluminum / rubber. Thread: Aluminum, 50 mm for NHP nozzle holder.

Entry size: 32 mm.

Order code	Model	Description
10112092	DVTC-6.5	Double Venturi nozzle, tungsten carbide, 6.5 mm x 130 mm
10112093	DVTC-8.0	Double Venturi nozzle, tungsten carbide, 8.0 mm x 150 mm
10112094	DVTC-9.5	Double Venturi nozzle, tungsten carbide, 9.5 mm x 170 mm
10112095	DVTC-11.0	Double Venturi nozzle, tungsten carbide, 11.0 mm x 200 mm
10112096	DVTC-12.5	Double Venturi nozzle, tungsten carbide, 12.5 mm x 210 mm

Blast Nozzles CLASSIC TC Short Type



abrasive blast nozzles
made from high-quality
tungsten carbide (TC).

Nozzles type STC

Wear-resistant short Venturi blasting nozzles made of tungsten carbide (TC). Service life: up to 400 h.
Cover: Rubber. Thread: Rubber, 50 mm for NHP nozzle holder. Entry size: 25 mm.

Order code	Model	Description
10112570	STC-5.0	Short Venturi nozzle, tungsten carbide, 5.0 mm x 80 mm
10112571	STC-6.5	Short Venturi nozzle, tungsten carbide, 6.5 mm x 80 mm
10112572	STC-8.0	Short Venturi nozzle, tungsten carbide, 8.0 mm x 80 mm
10112573	STC-9.5	Short Venturi nozzle, tungsten carbide, 9.5 mm x 80 mm
10112574	STC-11.0	Short Venturi nozzle, tungsten carbide, 11.0 mm x 80 mm
10112575	STC-12.5	Short Venturi nozzle, tungsten carbide, 12.5 mm x 80 mm

Nozzles type MTC

Wear-resistant short Venturi blasting nozzles made of tungsten carbide (TC). Service life: up to 400 h.
Cover: aluminum. Thread: aluminum, 50 mm for NHP nozzle holder. Entry size: 25 mm.

Order code	Model	Description
10112560	MTC-5.0	Short Venturi nozzle, tungsten carbide, 5.0 mm x 80 mm
10112561	MTC-6.5	Short Venturi nozzle, tungsten carbide, 6.5 mm x 80 mm
10112562	MTC-8.0	Short Venturi nozzle, tungsten carbide, 8.0 mm x 80 mm
10112563	MTC-9.5	Short Venturi nozzle, tungsten carbide, 9.5 mm x 80 mm
10112564	MTC-11.0	Short Venturi nozzle, tungsten carbide, 11.0 mm x 80 mm
10112565	MTC-12.5	Short Venturi nozzle, tungsten carbide, 12.5 mm x 80 mm

Blast Nozzles CLASSIC TC Stick-up Type



abrasive blast nozzles
made from high-quality
tungsten carbide (TC).

Nozzles type GTC

Wear-resistant Venturi type hose insert nozzles made of tungsten carbide (TC). Special designed for using with blast hose ID=25 mm. Service life: up to 400 h. Jacket: Aluminum.

Order code	Model	Description
10112031	GTC-5.0	Venturi nozzle, tungsten carbide, 5.0 mm x 100 mm
10112032	GTC-6.5	Venturi nozzle, tungsten carbide, 6.5 mm x 100 mm
10112033	GTC-8.0	Venturi nozzle, tungsten carbide, 8.0 mm x 100 mm

Nozzles type HTC

Wear-resistant Venturi type hose insert nozzles made of tungsten carbide (TC). Special designed for using with blast hose ID=32 mm. Service life: up to 400 h. Jacket: Aluminum.

Order code	Model	Description
10112502	HTC-6.5	Venturi nozzle, tungsten carbide, 6.5 mm x 120 mm
10112503	HTC-8.0	Venturi nozzle, tungsten carbide, 8.0 mm x 120 mm
10112504	HTC-9.5	Venturi nozzle, tungsten carbide, 9.5 mm x 120 mm
10112505	HTC-11.0	Venturi nozzle, tungsten carbide, 11.0 mm x 120 mm
10112506	HTC-12.5	Venturi nozzle, tungsten carbide, 12.5 mm x 120 mm

Blast Nozzles CLASSIC B₄C Venturi Type



abrasive blast nozzles
made from high-quality
boron carbide (B₄C).

Nozzles type SBC

Wear-resistant Venturi blasting nozzles made of boron carbide (B₄C).

Venturi bore nozzles produce a wide blast pattern and intensify abrasive velocity as much as 100% per given pressure. Venturi nozzles are the best option for increased productivity when blasting larger areas. Long Venturi style nozzles provide approximately a 40% increase in productivity in comparison with straight bore nozzles. Service life — up to 1000 h. Cover: Aluminum /Polyurethane protector. Thread: Aluminum, 50 mm for NHP nozzle holder. Entry size: 25 mm.

Order code	Model	Description
10112051	SBC-5.0	Venturi nozzle, boron carbide, 5.0 mm x 120 mm
10112052	SBC-6.5	Venturi nozzle, boron carbide, 6.5 mm x 130 mm
10112053	SBC-8.0	Venturi nozzle, boron carbide, 8.0 mm x 150 mm

Nozzles type UBC

Wear-resistant Venturi blasting nozzles made of boron carbide (B4C).

Venturi bore nozzles produce a wide blast pattern and intensify abrasive velocity as much as 100% per given pressure. Venturi nozzles are the best option for increased productivity when blasting larger areas. Long Venturi style nozzles provide approximately a 40% increase in productivity in comparison with straight bore nozzles. Service life — up to 1000 h. Cover: Aluminum /Polyurethane protector. Thread: Aluminum, 50 mm for NHP nozzle holder. Entry size: 32 mm

Order code	Model	Description
10112022	UBC-6.5	Venturi nozzle, boron carbide, 6.5 mm x 130 mm
10112023	UBC-8.0	Venturi nozzle, boron carbide, 8.0 mm x 150 mm
10112024	UBC-9.5	Venturi nozzle, boron carbide, 9.5 mm x 170 mm
10112025	UBC-11.0	Venturi nozzle, boron carbide, 11.0 mm x 200 mm
10112026	UBC-12.5	Venturi nozzle, boron carbide, 12.5 mm x 210 mm

Nozzles type DVBC

Wear-resistant Venturi blasting nozzles made of boron carbide (B4C).

The double Venturi style can be regarded as two nozzles in a row with a gap and holes in between to facilitate the entry of atmospheric air into the downward part of the nozzle. The exit segment is also wider than an ordinary nozzle. This modification increases the size of the blast pattern and minimizes a reduction in abrasive velocity. Service life — up to 1000 h. Cover: Aluminum /Polyurethane protector. Thread: Aluminum, 50 mm for NHP nozzle holder. Entry size: 32 mm.

Order code	Model	Description
10112042	DVBC-6.5	Double Venturi nozzle, boron carbide, 6.5 mm x 130 mm
10112043	DVBC-8.0	Double Venturi nozzle, boron carbide, 8.0 mm x 150 mm
10112044	DVBC-9.5	Double Venturi nozzle, boron carbide, 9.5 mm x 170 mm
10112045	DVBC-11.0	Double Venturi nozzle, boron carbide, 11.0 mm x 200 mm
10112046	DVBC-12.5	Double Venturi nozzle, boron carbide, 12.5 mm x 210 mm

Blast Nozzles CLASSIC B₄C Stick-up Type



abrasive blast nozzles
made from high-quality
boron carbide (B₄C).

Nozzles type GBC

Wear-resistant Venturi blasting nozzles made of boron carbide (B₄C). Special designed for using with blast hose ID=25 mm. Service life: up to 1000 h. Cover: Aluminum.

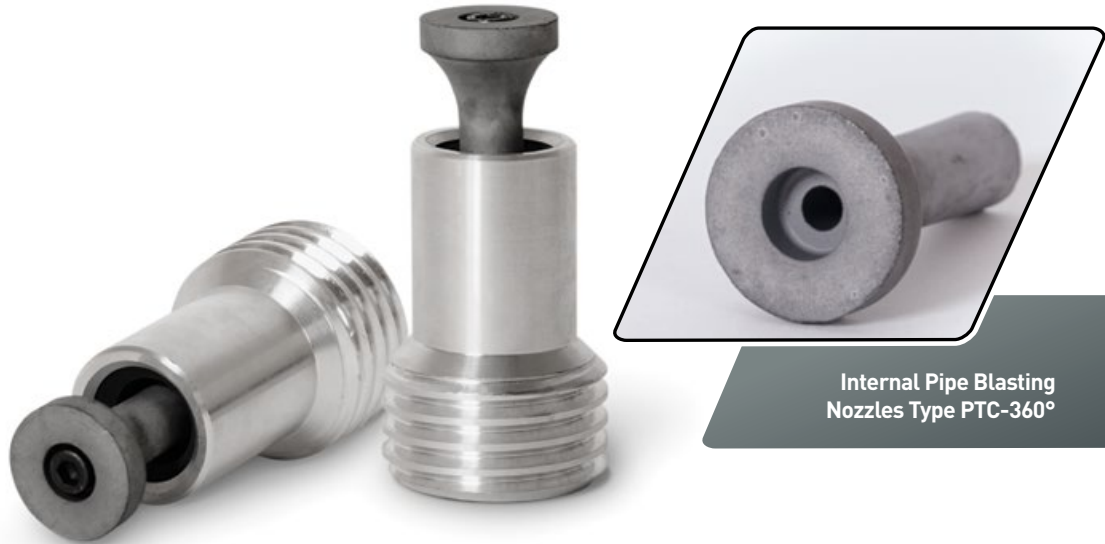
Order code	Model	Description
10112071	GBC-5.0	Venturi nozzle, boron carbide, 5.0 mm x 100 mm
10112072	GBC-6.5	Venturi nozzle, boron carbide, 6.5 mm x 100 mm
10112073	GBC-8.0	Venturi nozzle, boron carbide, 8.0 mm x 100 mm

Nozzles type HBC

Wear-resistant Venturi blasting nozzles made of boron carbide (B₄C). Special designed for using with blast hose ID=32 mm. Service life: up to 1000 h. Cover: Aluminum.

Order code	Model	Description
10112082	HBC-6.5	Venturi nozzle, boron carbide, 6.5 mm x 120 mm
10112083	HBC-8.0	Venturi nozzle, boron carbide, 8.0 mm x 120 mm
10112084	HBC-9.5	Venturi nozzle, boron carbide, 9.5 mm x 120 mm
10112085	HBC-11.0	Venturi nozzle, boron carbide, 11.0 mm x 120 mm
10112086	HBC-12.5	Venturi nozzle, boron carbide, 12.5 mm x 120 mm

Internal Pipe Blast Nozzles 360°



Internal Pipe Blasting
Nozzles Type PTC-360°



Internal pipe blasting nozzles type PTC-360° are designed to blast clean the interior of pipes ranging in size from 2" to 5" I.D. The nozzle connected an abrasive blast machine in place of a standard nozzle. In operation, the PTC-360° nozzle directs the air/abrasive mixture at a deflection tip. This tip causes the blast pattern to fan out into a wide, circular pattern, which cleans the inside of the pipe as the nozzle is passed through. Made from tungsten carbide (TC). Fits all Contracor nozzle holders.

Characteristics

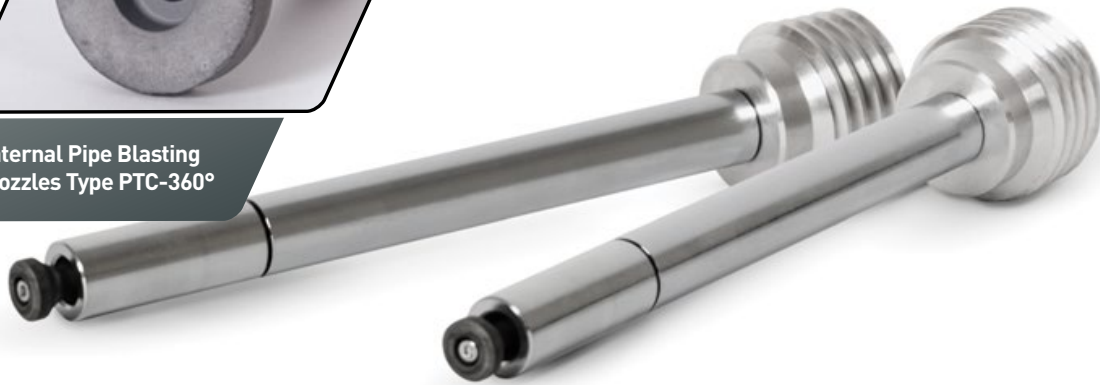
Highly wear-resistant angle type blasting nozzles. Made from tungsten carbide (TC). Lifetime: Up to 400 h. Jacket: Aluminum. Thread: Aluminum, 50 mm for NHP nozzle holder.

Order code	Model	Description
10112590	PTC-360°	Internal pipe blasting nozzle, tungsten carbide, 8.0mm x 75mm
29010007		Deflection tip for PTC- 360°, tungsten carbide (TC)

Internal Pipe Blast Nozzles 360°L



Internal Pipe Blasting
Nozzles Type PTC-360°



Internal pipe blasting nozzles type PTC-360°L are designed to blast clean the interior of pipes ranging in size from 3/4" to 2" I.D. The nozzle connected an abrasive blast machine in place of a standard nozzle. In operation, the PTC-360°L nozzle directs the air/abrasive mixture at a deflection tip. This tip causes the blast pattern to fan out into a wide, circular pattern, which cleans the inside of the pipe as the nozzle is passed through. The length of the working area is 200 mm. Made from tungsten carbide (TC). Fits all Contracor nozzle holders.

Characteristics

Highly wear-resistant angle type blasting nozzles. Made from tungsten carbide (TC). Lifetime: Up to 400 h. Jacket: Aluminum. Thread: Aluminum, 50 mm for NHP nozzle holder.

Order code	Model	Description
10112595	PTC-360°L	Internal pipe blasting nozzle, tungsten carbide, 5.0 mm x 200 mm
29002001		Exchangeable deflection tip for PTC- 360°L, tungsten carbide (TC)

Angle Blast Nozzles ATC



Angle nozzles are used for getting inside tight or hard to reach places like corners, behind flanges or inside pipes. ATC type angle nozzles are compact and shoot out the abrasive at 45° angles. Made from tungsten carbide (TC). Fits all Contracor nozzle holders.

Characteristics

Highly wear-resistant angle type blasting nozzles. Made from tungsten carbide (TC). Lifetime: Up to 400 h. Jacket: Rubber. Thread: 50-mm coarse rubber thread.

Order code	Model	Description
10112511	ATC-5.0-1	Angle nozzles, tungsten carbide, bore 1x45°
10112512	ATC-6.5-1	Angle nozzles, tungsten carbide, bore 1x45°
10112513	ATC-8.0-1	Angle nozzles, tungsten carbide, bore 1x45°
10112514	ATC-9.5-1	Angle nozzles, tungsten carbide, bore 1x45°
10112521	ATC-5.0-2	Angle nozzles, tungsten carbide, bore 2x45°
10112522	ATC-6.5-2	Angle nozzles, tungsten carbide, bore 2x45°
10112523	ATC-8.0-2	Angle nozzles, tungsten carbide, bore 2x45°
10112524	ATC-9.5-2	Angle nozzles, tungsten carbide, bore 2x45°
10112531	ATC-5.0-3	Angle nozzles, tungsten carbide, bore 3x45°
10112532	ATC-6.5-3	Angle nozzles, tungsten carbide, bore 3x45°
10112533	ATC-8.0-3	Angle nozzles, tungsten carbide, bore 3x45°
10112534	ATC-9.5-3	Angle nozzles, tungsten carbide, bore 3x45°

Bending Blast Nozzles BTC



Bending nozzles are used for getting inside tight or hard to reach places like corners, behind flanges or inside pipes. BTC type bending nozzles are compact and shoot out the abrasive at 45° angles. Made from tungsten carbide (TC). Fits all Contracor nozzle holders.

Characteristics

Highly wear-resistant angle type blasting nozzles. Made from tungsten carbide (TC). Lifetime: Up to 400 h.
Jacket: Aluminum / Polyurethane protector Thread: 50-mm coarse rubber thread.

Order code	Model	Description
10112581	BTC-6.5	Bending nozzle, tungsten carbide, angle 45°, 6.5 mm x 125 mm
10112582	BTC-8.0	Bending nozzle, tungsten carbide, angle 45°, 8.0 mm x 125 mm
10112583	BTC-9.5	Bending nozzle, tungsten carbide, angle 45°, 9.5 mm x 125 mm
10112584	BTC-11.0	Bending nozzle, tungsten carbide, angle 45°, 11.0 mm x 125 mm
10112585	BTC-12.5	Bending nozzle, tungsten carbide, angle 45°, 12.5 mm x 125 mm

Short Blast Nozzles NTC



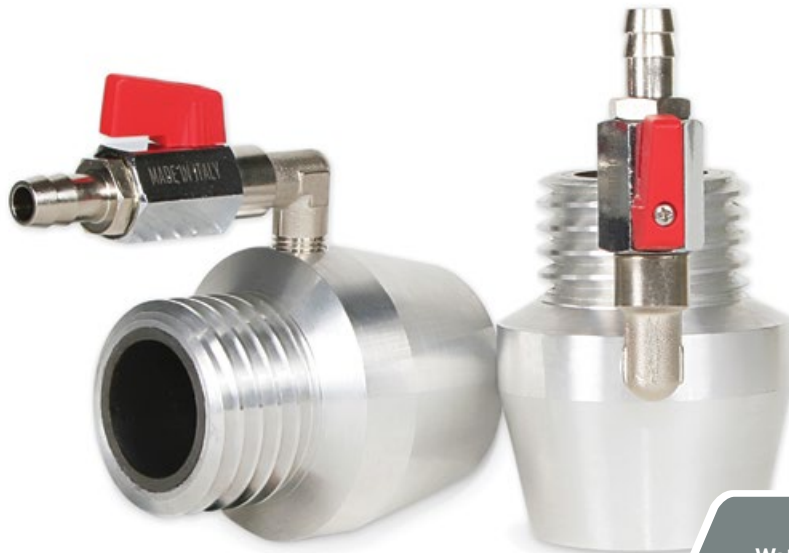
Wear-resistant short Venturi blasting nozzles made of tungsten carbide (TC).

Characteristics

Service life - up to 400 h. Cover: Aluminium Thread: Aluminium, 3/4" for NHP-0 nozzle holder.

Order code	Model	Description
10112550	NTC-3.5	Short Venturi nozzle, tungsten carbide, 3.5 mm x 45 mm
10112551	NTC-5.0	Short Venturi nozzle, tungsten carbide, 5.0 mm x 45 mm
10112552	NTC-6.5	Short Venturi nozzle, tungsten carbide, 6.5 mm x 45 mm
10112553	NTC-8.0	Short Venturi nozzle, tungsten carbide, 8.0 mm x 45 mm

Water Injection Blast Attachment WBA



Water induction
blast nozzles.



Contracor® water blast equipment has been specifically designed to meet growing customer demand for a multi-purpose cleaning system that is fast, economical and environment-friendly.

Field of application

Dust-reducing high-performance cleaning of steel, stone and concrete surfaces. Cleaning up to grade SA-3.0. Performance up to 20% higher than dry blasting.

Designed to work with

any water matching abrasives, max. grain size 3,5 mm. Universal Water Blast Attachment. Sleeve made from high grade tungsten carbide. Fits all Contracor® blast nozzles. Jacket: Aluminum. Thread: 50-mm coarse aluminum thread.

Order code	Model	Description
10112000	WBA	Water Blast Attachment, tungsten carbide sleeve

Water Injection Blast Nozzles WBN



Water induction
blast nozzles.



Contracor® water blast equipment has been specifically designed to meet growing customer demand for a multi-purpose cleaning system that is fast, economical and environment-friendly.

Field of application

Dust-reducing high-performance cleaning of steel, stone and concrete surfaces. Cleaning up to grade SA-3.0. Performance up to 20% higher than dry blasting.

Designed to work with

any water matching abrasives, max. grain size 3,5 mm. Water blast nozzles for wet blast applications. Made from high grade tungsten carbide. Jacket: Aluminum. Thread: 50-mm coarse aluminum thread.

Order code	Model	Description
10112002	WBN-6.5	Water blast nozzle, tungsten carbide, dia. 6.5, entry 32 mm
10112003	WBN-8.0	Water blast nozzle, tungsten carbide, dia. 8.0, entry 32 mm
10112004	WBN-9.5	Water blast nozzle, tungsten carbide, dia. 9.5, entry 32 mm



part # 6

**SPECIAL
APPLICATION EQUIPMENT**

Internal Pipe Blast Tool PBT-1



- For pipes 3" (75mm) - 12" (300mm) ID
- Adjustable centering carriage for consistent blast pattern
- Use with standard blast machine



The PBT-1 pipe cleaning tool is an ideal companion to clean blast pipes from 2" (50mm) to 12" (300mm) inner diameter. The PBT-1 consists of a tungsten-carbide nozzle in a venturi form with a tungsten-carbide circular deflection tip, which blasts abrasive media in a continuous circle pattern. The tungsten carbide materials ensure low wear and a long service life. Centering collars and carriage allow fitting the PBT-1 to any pipe with an inner diameter between 3" (75mm) and 12" (300mm). With the centering collars PBT-1 can be used in the 3" (75mm) to 5" (125mm) I.D. pipe range. With centering carriage PBT-1 is adjustable to handle all diameters between 5" (125mm) and 12" (300mm) I.D.

Standard delivery

Centering collars sets, centering carriage.

Order code	Model	Description
10112630	PBT-1	Pipe blasting tool 3" (75mm) - 12" (300mm) with 12,5 mm nozzle and tungsten carbide (TC) deflection tip. Complete package incl. centering collars sets and centering carriage.

Internal Pipe Blast Tool PBT-2 ROTOBLAST



- For pipes 12" (304,8 mm) to 36" (914,4 mm) ID
- Variable feed and optimal rotation speed offers flexibility in cleaning rates for varying surface conditions
- Adjustable centering carriage for consistent blast pattern
- Use with standard blast machine

The PBT-2 ROTOBLAST is an accessory for all Contracor blast machines that allows easy cleaning of the internal surface of steel pipes. It is durable, portable, and most of all, easy to use. It guaranteed considerable increases in productivity. The PBT-2 ROTOBLAST consists of an adjustable centre carriage and a constant speed rotating blast head to produce a uniform cleaned blast surface. The carriage is infinitely adjustable from 12" (304,8mm) to 36" (914,4mm) inside diameter. The rotating head is driven by compressed air and two radially positioned blast nozzles. The adjustment of the feed allows a high operational flexibility with all degrees of corrosion of the inner surfaces. The PBT-2 ROTOBLAST unit can be operated with nozzle sizes from 6.5mm to 9.5mm inner diameter.

Standard delivery

Legs set, 2 x NTC(F)-6.5 nozzles, 10 x spare leather washers.

Order code	Model	Description
10112730	PBT-2 ROTOBLAST	Pipe blasting tool 12" (304,8mm) - 36" (914,4mm). Complete package incl. Legs set, 2 x NTC(F)-5.0 nozzles, 10 x spare leather washers
29003025	NTC(F)-6.5	Dia. 6.5 mm TC Blast nozzle for PBT-2 ROTOBLAST
29003026	NTC(F)-8.0	Dia. 8.0 mm TC Blast nozzle for PBT-2 ROTOBLAST
29003027	NTC(F)-9.5	Dia. 9.5mm TC Blast nozzle for PBT-2 ROTOBLAST

**Closed Circuit
Blast Tool EDUCT-O-MATIC**



Hand-portable closed-circuit blast tool.

The Educt-O-Matic is the compact hand-portable closed-circuit blast tool, which can be transported everywhere and required just 2.5m³/min of air at 6bar. Blasting and media recovery are controlled just with one trigger. Media recovery is initiated by slightly pulling the trigger, while pulling the trigger fully starts the suction blast system.

Abrasive is stored in a compact conical hopper from where it is metered into the blast apparatus. Abrasive is drawn into the mixing chamber of the Educt-O-Matic by the high speed airstream, where it is mixed with air, and is then propelled out of the nozzle. The blast head is adjustable and swivels to allow blasting at any angle. Abrasive and dust are captured in the rubber attachment. Reusable abrasive is drawn back to the hopper, whereas broken abrasive and dust are directed to the dust bag.

An area about 30mm wide can easily be cleaned with an Educt-O-Matic. When finished with blasting, just release the trigger to half-way for two to three seconds, and the vacuum recovers the remaining dust and abrasive. Vacuuming is stopped by fully releasing the trigger. The Educt-O-Matic works best with steel or iron grit. Dust and broken abrasive are captured in a simple cotton bag.

Standard delivery

EDUCT-O-MATIC, 6 attachments and dust bag.

Order code	Model	Description
10112800	Educt-O-Matic	Hand-portable closed-circuit blast tool. Complete package incl. 6 attachments and dust bag

Portable Suction Blast Tool POWER GUN



- Lightweight, portable and easily transportable tool
- Suitable for use with all media containers, or even straight out of the bag
- Simple work principle – just plunge the suction lance into the container of abrasive and pull the trigger
- Easy to use and maintain

The Contracor Power Gun is a suction blast tool ideally suited to small jobs or locations with limited air supplies. Thanks to its light weight and compact dimensions, the Contracor Power Gun can be used in places where erecting a conventional pressure blast machine would be awkward or inconvenient.

The Power Gun can be used with all common blast media, to clean or etch metal, glass, stone or other hardwearing surfaces.

To operate the Power Gun, just connect it to a compressed air source, and submerge the suction lance to which the abrasive hose is connected partially into a container of blast media.

To commence blasting, simply depress the lever on the Power Gun. The tool operates according to Bernoulli's principle, where a low-pressure area is created by the compressed air rushing past the abrasive-injection point, where the abrasive hose is connected to the gun. This low-pressure area draws abrasive into the airstream, where mixing takes place. The air-abrasive mix is then exhausted out of the gun and strikes the blasting surface.

Standard delivery

Power Gun, suction lance and 5m suction hose with hose clamps.

Order code	Model	Description
10112900	Power Gun	Portable suction type blast tool. Complete package incl. suction lance and 5m suction hose

Blast Light ABL



- 800 lumens, concentrated light cone
- Modern LED technology
- Light housing is specially designed for blast hose mounting
- Simple and fast exchange of the disposable glass
- Mounted ABL light will not interfere with the normal operation of DMH handle

The ABL blast light is designed for illuminating a working area during sandblast cleaning operations. The lamp runs on 12-24 volts and provides a bright concentrated light which can be directed at the working area. It utilizes an approximately 800-lumen bright LED module to produce a concentrated light cone.



The ABL blast light attaches to the sandblast hose and does not interfere with operation of the DMH handle. The operator does not have to hold the light in one hand in order for it to work effectively. The modern LED light runs on a 12-24 V DC battery or other 12-24 V DC source.

The lamp has a hermetically sealed design and is protected against dust and abrasive material. A stable and replaceable deflector glass protects the lamp against abrasive material damage. The disposable glass can be easily replaced once the rubber cover is removed. The LED light is supplied with a 1.5-m power cord.

Standard delivery

Assembled 12V LED light with 1.5-m power cord.

Order code	Model	Description
29004000	ABL	LED Blast light, approx. 800 lumens, 12-24 V DC, incl. 1.5-m power cord.



part # 7

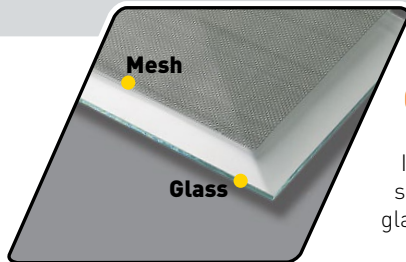
OPERATOR SAFETY EQUIPMENT

Abrasive Blasting Helmet COMFORT



Easy and sure locking window frame. Air flow indicator for safety. 6-point nylon suspension have quick and easy adjustments. Pressure regulator. Durable nylon cape. Handle for easy transportation. Exchangeable cotton neck seal.

This very comfortable, lightweight and value-for-money hood is suitable for any kind of abrasive blasting work. Its design ensures constant airflow to the visor in order to prevent misting. The Comfort hood is equipped with a pressure regulator, an airflow indicator and a cape.



COMFORT disposable lenses

In Comfort blast helmet regular glass, protected with a stainless steel wire mesh screen, is used as disposable lens. Replacement is easy and cheap, as a simple glass plate can be cut to size and used as replacement.

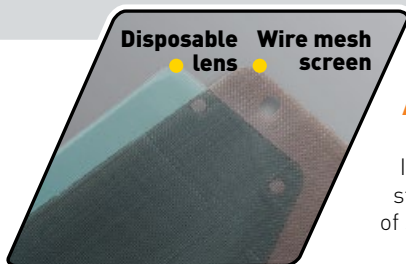
Order code	Model	Description
10130000	COMFORT	Blast Helmet, durable nylon cape

Abrasive Blasting Helmet ASPECT



The robust, durable shell of the Aspect blast helmet ensures operator security and a long service life of the helmet, whilst an air baffle delivers a constant flow of air to the operator's head and face to reduce fatigue, prevent misting and increase productivity and safety. The top of the cape is protected from ricochet of blast material by an extended window frame. The embedding of media between the lenses is prevented by an integral 1"-deep visor. Easy closing of the window through a slot which aligns the closing latch and tab. The cape is fixed to the bottom rim of the helmet via an adjustable ratchet buckle, which ensures a secure fit and easy replacement. High operator visibility and security are provided by two lenses and a wire mesh screen.

This very comfortable, lightweight and value-for-money helmet is suitable for any kind of abrasive blasting work. The helmet is designed with a wide viewing window. This is an important feature when the operator's movement is limited, e.g. in blasting rooms, while cleaning the internal surfaces of reservoirs, holds, etc.



ASPECT disposable lenses

In Aspect blast helmet disposable clear acetate lenses protected by a stainless steel wire mesh screen are used. Disposable lenses can be exchanged in a matter of seconds, and are available in practical packs with 50pcs.

Order code	Model	Description
10130600	ASPECT	Blast Helmet, durable nylon cape
10130602		Disposable lenses, pack 50 pcs.



Breathing Air Filter BAF

Designed to be used for supplying clean air to the blasting hood.

The BAF filter is designed to remove condensate, oil and up to 98% of particles having a size of 0,5 microns less.

The BAF breathing air filter is equipped with a pressure regulator, a pressure gauge, a safety valve and a drain valve.

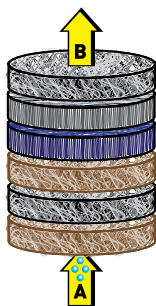
The filter can be retrofit to work for two or more operators.

WARNING!
The BAF filter does not remove carbon monoxide (CO) and other toxic gases.



Air Filter Replacement Cartridge ACF

Replacement cartridges for the ACF breathing air filter. The cartridge should be replaced after ca. 450 hours of operation. A filter only needs to be bought once. The cartridge alone is subject to regular replacement. The frequency of cartridge replacement depends on the quality of air supplied to the hood.



How the cartridge works:

- Carded cotton removes macro particles.
- Activated alumina absorbs oil and moisture.
- Activated charcoal removes odors and moisture.
- Felt material removes macro particles.
- Carded cotton additionally removes macro particles.
- Respiratory felt at final stage acts as final filter before air is transferred to operator (B).
- Water is removed by vortex action of air in outer cylinder.

Order code	Model	Description
10130400	BAF-1	Air Filter. Complete package incl. 2 outputs, pressure regulator, drain valve, safety valve
10130401	ACF	Air Filter Cartridge

Breathing Air Conditioner CCT



The output temperature of the CCT air conditioner is up to $\pm 20^{\circ}\text{C}$ below or above the input temperature.

The CCT breathing air conditioner is designed for use with all blast helmets Comfort, Aspect, Commander and Panorama. It functions according to the principle of airflow separation and intended for heating or cooling breathing air which travels from the breathing air filter to the blast helmets.

Order code	Model	Description
10130305	CCT	Air conditioner cold /hot for blast helmets COMFORT and ASPECT

Breathing Air Hose BAH



For connection between blasting hood and airline filter BAF.

Special thick-wall hose made from non-toxic materials. Thick-walls prevents the hose from buckling and pinching.

Order code	Model	Description
10130909	BAH	Breathing air hose 9x15mm, with mounted fittings, 20 m. Roll
10130900	BAH	Breathing air hose 9x15mm, with mounted fittings, 40 m. Roll

Blast Overall, HEAVY-DUTY



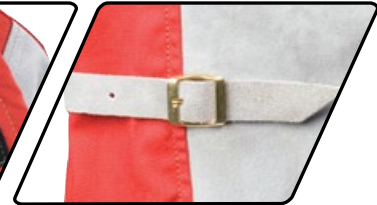
Advantages

Both zip and velcro closure for double dust protection

Fastenings on the pants prevent the entry of dust under the clothing



Double-seamed for more durability



Cotton inner layer reduced leather pull ing in the knees



Elastic seals around the arms

Long sleeves leather gloves



- Double stitching for long service life
- Gauntlet gloves protect hands and wrist
- Adjustable straps on cuffs help keep dust and abrasive at bay for any operator.
- Durable leather panels protect arms and legs, while durable breathable cotton improves operator comfort.

The Contracor heavy-duty blast overall with gauntlet-style leather gloves protect the operator from rebounding abrasive media. The arms and legs are protected by durable leather panels, while heavy-duty breathable cotton fabric on the back permits an air-flow, increasing operator comfort. The Contracor heavy-duty blast overall is equipped with both zip and Velcro closures for double dust protection, elastic seals around the arms and fastenings on the pants to keep out dust and abrasive. Double stitching on the overall ensures long service life.

Order code	Size	Description
10130700	50 (S)	Heavy-Duty Blast Overall, Leather / Cotton, incl. gloves. Cert. to ISO14877:2002
10130701	52 (M)	Heavy-Duty Blast Overall, Leather / Cotton, incl. gloves. Cert. to ISO14877:2002
10130702	54 (L)	Heavy-Duty Blast Overall, Leather / Cotton, incl. gloves. Cert. to ISO14877:2002
10130703	56 (XL)	Heavy-Duty Blast Overall, Leather / Cotton, incl. gloves. Cert. to ISO14877:2002
10130704	58 (XXL)	Heavy-Duty Blast Overall, Leather / Cotton, incl. gloves. Cert. to ISO14877:2002
10130705	60 (XXXL)	Heavy-Duty Blast Overall, Leather / Cotton, incl. gloves. Cert. to ISO14877:2002
10130710		Long sleeves leather gloves. Cert. to ISO14877:2002

Blast overall, LIGHT-DUTY



Advantages

Both zip and velcro closure for double dust protection

Elastic seals around the arms



Double-seamed for more durability

Long sleeves leather gloves



- Weighs and costs less than Contracor heavy-duty blast overall.
- Sailcloth and cotton construction is easily machine washable.
- Comfortable to use in the summer time or in the countries with hot climate

The Contracor light-duty blast overall protects the operator from rebounding abrasive media. It is an inexpensive substitute for a heavy-duty overall, especially for short-term work or non-blast personnel working intermittently at a blast site. Through its lighter weight, the light-duty overall is more comfortable to wear in hot climates and in summer. The sailcloth and cotton fabrics are easily machine washable. After a job involving toxic elements, discarding a light-duty overall is more economically sensible than throwing a heavy-duty overall away.

Order code	Size	Description
10130780	50 (S)	Light blast overall, sailcloth / cotton, incl. gloves, Cert. to ISO 14877:2002
10130781	52 (M)	Light blast overall, sailcloth / cotton, incl. gloves, Cert. to ISO 14877:2002
10130782	54 (L)	Light blast overall, sailcloth / cotton, incl. gloves, Cert. to ISO 14877:2002
10130783	56 (XL)	Light blast overall, sailcloth / cotton, incl. gloves, Cert. to ISO 14877:2002
10130784	58 (XXL)	Light blast overall, sailcloth / cotton, incl. gloves, Cert. to ISO 14877:2002
10130785	60 (XXXL)	Light blast overall, sailcloth / cotton, incl. gloves, Cert. to ISO 14877:2002
10130710		Long sleeves leather gloves, grey, Cert. to ISO 14877:2002



part # 8

COMPRESSED AIR-LINE EQUIPMENT AND COMPONENTS

Portable Moisture Extraction Systems MEX



APPLICATION
Abrasive blast cleaning, paint spraying with a pneumatic drive, guniting, and construction and road works using pneumatic tools.

Moisture extraction systems MEX remove condensate and oil from the air stream during abrasive blast cleaning. Condensate and oils in the abrasive blast cleaning system lead to the caking of abrasive material and potential blocking of the metering valves, hoses and nozzles. Dry and cleaned compressed air prevents caking of abrasive material, increases performance and reduces maintenance costs. Moisture extraction systems MEX are an efficient means of removing up to 95% of condensate and oil which are commonly present in compressed air. Dry air prevents moist abrasive material, which would lead to increased wear, downtime and extra servicing.

The MEX-P aftercooler



is fitted with a pressure controller for controlling the air flow of the fan, and a filter and a lubricator to ensure the long service life of the pneumatic drive.

The MEX-E aftercooler



is fitted with a contactor starter with dampproof and dust-proof casing.

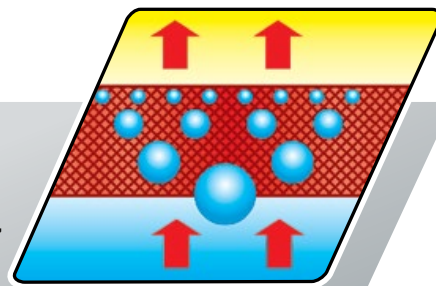
Moisture Extraction Systems MEX



are equipped with both cyclone and coalescing separators capable of eliminating up to 95% of condensed moisture from compressed air.

Coalescence element

The compressed air inside the receiver passes through a mesh coalescing element. Moisture and oil are deposited on the grid coalescence element and, when confronted, form large drops, which under the action of gravity fall to the bottom of the filter.



Designed for operation

With any brand of portable and stationary screw compressor unit. Compressed air flowing from a diesel compressor has a high temperature of approximately 90°C. At such a temperature, compressed air contains a large amount of moisture in the form of steam vapour. If an aftercooler and cyclone condensate separator are not used, compressed air can add up to 21.5 litres of water per hour into the system with a compressor operating at 5.7 m³/min capacity and a pressure of 7 bar. Moisture extraction systems MEX cool compressed air to a temperature 3° C - 10° C higher than the ambient temperature. Once the air is cooled, vapour moisture condenses and up to 95% of condensed moisture may be eliminated from the system.

Functional characteristics

- durable full welded construction
- pneumatic or electric drive
- efficient cyclone separator
- distributing header to three or four ball valves
- pressure controller / filter / lubricator (MEX-P)
- contactor starter in sealed casing (MEX-E)
- lifting lugs and forklift slots

Technical data	MEX-E-1	MEX-E-2	MEX-E-3	MEX-P-1	MEX-P-2	MEX-P-3
Maximum working pressure, bar	12					
Capacity, m ³ /min	20	30	45	20	30	45
Voltage, V	380~ /50 Hz			-	-	-
Power, kW	0,135	0,820	0,830	-	-	-
Pressure of air motor min/max, bar	-			2 / 6		
Consumption of compressed air with min/max pressure of air motor, m ³ /min	-			0,6 / 1,4		
Thread connection, inlet	1½"	2"	3"	1½"	2"	3"
Thread connection, outlet	1x¾"	1x¾"	1x¾"	1x¾"	1x¾"	1x¾"
	1x1"	1x1¼"	1x1¼"	1x1"	1x1¼"	1x1¼"
	1x1¼"	1x1½"	2x1½"	1x1¼"	1x1½"	2x1½"

Order code	Model	Description
14380001	MEX-P-1	Moisture extraction system, capacity 20 m ³ /min, pneumatic drive
14380002	MEX-P-2	Moisture extraction system, capacity 30 m ³ /min, pneumatic drive
14380003	MEX-P-3	Moisture extraction system, capacity 45 m ³ /min, pneumatic drive
14380011	MEX-E-1	Moisture extraction system, capacity 20 m ³ /min, electric drive
14380012	MEX-E-2	Moisture extraction system, capacity 30 m ³ /min, electric drive
14380013	MEX-E-3	Moisture extraction system, capacity 45 m ³ /min, electric drive

Portable Compressed Air Aftercoolers ACP/ACE



APPLICATION

Abrasive blast cleaning, paint spraying with a pneumatic drive, guniting, and construction and road works using pneumatic tools.

ACP/ACE aftercoolers of compressed air remove condensate and oil from the air stream during abrasive blast cleaning. Condensate and oils in the abrasive blast cleaning system lead to the caking of abrasive material and potential blocking of the metering valves, hoses and nozzles. Dry and cleaned compressed air prevents caking of abrasive material, increases performance and reduces maintenance costs. ACP/ACE coolers of compressed air are an efficient means of removing up to 95% of condensate and oil which are commonly present in compressed air. Dry air prevents moist abrasive material, which would lead to increased wear, downtime and extra servicing.

The ACP aftercooler



is fitted with a pressure controller for controlling the air flow of the fan, and a filter and a lubricator to ensure the long service life of the pneumatic drive.

The ACE aftercooler



is fitted with a contactor starter with damp-proof and dust-proof casing.

ACP/ACE aftercooler



are fitted with an efficient cyclone separator capable of eliminating up to 95% of condensed moisture from compressed air.

Designed for operation

With any brand of portable and stationary screw compressor unit. Compressed air flowing from a diesel compressor has a high temperature of approximately 90°C. At such a temperature, compressed air contains a large amount of moisture in the form of steam vapour. If an aftercooler and cyclone condensate separator are not used, compressed air can add up to 21.5 litres of water per hour into the system with a compressor operating at 5.7 m³/min capacity and a pressure of 7 bar. ACP/ACE aftercoolers of compressed air cool compressed air to a temperature 3° C - 10° C higher than the ambient temperature. Once the air is cooled, vapour moisture condenses and up to 95% of condensed moisture may be eliminated from the system.

Functional characteristics

- portable design
- pneumatic or electric drive
- efficient cyclone separator
- distributing header to three or four ball valves
- pressure controller / filter / lubricator (ACP)
- contactor starter in sealed casing (ACE)
- inflated wheels

Technical data	ACE-1	ACE-2	ACE-3	ACP-1	ACP-2	ACP-3
Maximum working pressure, bar	12					
Capacity, m ³ /min	8	14	20	8	14	20
Voltage, V	380~ /50 Hz			-	-	-
Power, kW	0,3	0,9	0,7	-	-	-
Pressure of air motor min/max, bar	-			2 / 6		
Consumption of compressed air with min/max pressure of air motor, m ³ /min	-			0,6 / 1,4		
Thread connection, inlet	1½"	2"	3"	1½"	2"	3"
Thread connection, outlet	1x¾" 1x1" 1x1¼"	1x¾" 1x1¼" 1x1½"	1x¾" 1x1¼" 2x1½"	1x¾" 1x1" 1x1¼"	1x¾" 1x1¼" 1x1½"	1x¾" 1x1¼" 2x1½"

Order code	Model	Description
14390001	ACP-1	Compressed air aftercooler, capacity 8 m ³ /min, pneumatic drive
14390002	ACP-2	Compressed air aftercooler, capacity 14 m ³ /min, pneumatic drive
14390003	ACP-3	Compressed air aftercooler, capacity 20 m ³ /min, pneumatic drive
14390011	ACE-1	Compressed air aftercooler, capacity 8 m ³ /min, electric drive
14390012	ACE-2	Compressed air aftercooler, capacity 14 m ³ /min, electric drive
14390013	ACE-3	Compressed air aftercooler, capacity 20 m ³ /min, electric drive

Portable High Volume Coalescent Filters CK



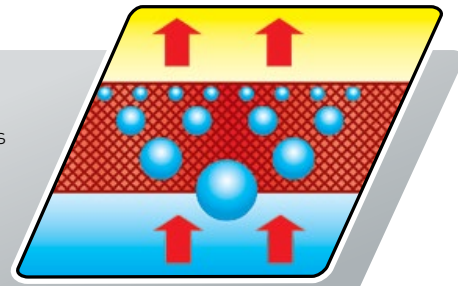
Portable high volume coalescent filters CK-50/150/250 are a most effective solution to remove up to 95% of the liquid condensate and dirt particles, down to 10 microns, from compressed air supply. Specially designed for portable use by sandblasting applications.

APPLICATION

Designed for use with portable compressors in conjunction with a conventional particulate air filter CAF-3 installed at the blast machine inlet.

Coalescence element

Portable 50/150/250-litre capacity high volume coalescent filter CK removes water from compressed air supply for multiple blast machines. As moist air enters the CK, it moves up inside the chamber passing through a fine mesh stainless steel filter element that causes the water vapour and oil to coalesce into larger drops that fall to the bottom of the filter. Most particulate material, down to 10 microns, gets trapped in the filter mesh.



Standard delivery

50/150/250 litre volume steel tank. Stainless steel coalescent element. Safety valve. Manual drain valve.

Advantages

- Simple design, special for field use.
- Lower purchase and operating costs than by refrigerated or chemical drying systems.
- Cleaning with water only required for maintenance.

Technical data	CK-50	CK-150	CK-250
Maximum working pressure, bar		12	
Capacity, m ³ /min	20	30	45
Vessel volume, Litre	50	150	250
Thread connection, inlet	1½"	2"	2x1½"
Thread connection, outlet	1½"	2"	2x1½"

Order code	Model	Description
13150100	CK-50	Portable high volume coalescent filter, capacity 20 m ³ /min
13150150	CK-150	Portable high volume coalescent filter, capacity 30 m ³ /min
13150250	CK-250	Portable high volume coalescent filter, capacity 45 m ³ /min

Centrifugal Separators AS



Centrifugal separators type AS are a most effective solution to remove up to 99% of the liquid condensate present in the compressed air network. AS separators type allow extremely reliable centrifuge operation and do not require any maintenance.

Drain valve



Internal-type drain valve. Reliable maintenance-free float drain valve system.

APPLICATION

Installation downstream of aftercoolers, air receivers, refrigeration dryers etc... Designed to remove up to 99% of liquid condensate in the compressed air by very low maintenance costs.

Light aluminium body



Built into drain valve.
Special internal shape to prevent air eddies. Condensate does not exude back to the line by vortex flow.
Replaceable sealing gasket for dependable air-tight sealing.

Air flow swirl vane



Generates cyclonic swirl of air inside separator.

Air flow guide



One of the condensate pre-separation stages.
Guides air flow along walls of separator's bowl.

Standard delivery

Robust aluminium housing. Efficient automatic drain.

Technical data	AS-047	AS-072	AS-085	AS-148
Maximum operating pressure, bar	16			
Capacity, m ³ /min	4,7	7,2	8,5	14,8
Air connection size	1"	1¼"	1½"	2"

Order code	Model	Description
13200105	AS-047	AS-047 1" Cyclone separator
13200110	AS-072	AS-072 1.1/4" Cyclone separator
13200106	AS-085	AS-085 1.1/2" Cyclone separator
13200107	AS-148	AS-148 2" Cyclone separator



Hoses For Compressed Air



Working pressure: 12 bar
 Burst pressure: 36 bar
 Working temperature: -30°C to +80°C.
 Cover: yellow rubber (19—25 mm) / textile wrapped (32—38 mm).

Special build for heavy duty applications such as sandblasting.

Order code	Model	Description
10151002	AirFlex-19	Compressed Air Hoses 19x28, roll 40m
10151003	AirFlex-25	Compressed Air Hoses 25x36, roll 40m
10151004	AirFlex-32	Compressed Air Hoses 32x48, roll 40m
10151005	AirFlex-38	Compressed Air Hoses 38x54, roll 40m

**Air Couplings,
Power Clamps, Fittings**



Quick-release air hose connection, for hose I.D. ≤ 1" (25mm)

For quick-release air hose connection to the compressor's quick-release couplings.

View	Order code	Description
	10150017	Compressed air coupling, for hose I.D. = 3/8" (10mm)
	10150018	Compressed air coupling, for hose I.D. = 1/2" (13mm)
	10150019	Compressed air coupling, for hose I.D. = 3/4" (19mm)
	10150020	Compressed air coupling, for hose I.D. = 1" (25mm)

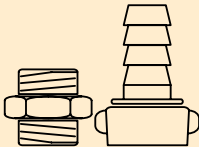
Male thread stem, for hose I.D. ≥ 1.1/4"

For fixed air hose connection to the compressor's output ball valves.

View	Order code	Description
	10150024	Male thread stem 1.1/4" for hose ID=32mm, for hose I.D. = 1.1/4" (32mm)
	10150025	Male thread stem 1.1/2" for hose ID=38mm, for hose I.D. = 1.1/2" (38mm)
	10150026	Male thread stem 2" for hose ID=53mm, for hose I.D. = 2" (50mm)

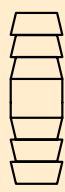
Quick-release connecting set, for hose I.D. \geq 1.1/4"

For quick-release air hose connection to the compressor's output ball valves.

View	Order code	Description
	Quick-release connecting set 1.1/4"	
	10150027	Connecting nipple 1.1/4" x RD 46 x 1/6" , for ball valve internal thread 1.1/4"
	10150021	Connecting stem 1.1/4" x wing nut RD 46 x 1/6", for hose I.D. = 1.1/4" (32mm)
	Quick-release connecting set 1.1/2"	
	10150028	Connecting nipple 1.1/2" x RD 55 x 1/6" , for ball valve internal thread 1.1/2"
	10150022	Connecting stem 1.1/2" x wing nut RD 55 x 1/6", for hose I.D. = 1.1/2" (38mm)
	Quick-release connecting set 2"	
	10150029	Connecting nipple 2" x RD 75 x 1/6" , for ball valve internal thread 2"
	10150023	Connecting stem 2" x wing nut RD 75 x 1/6", for hose I.D. = 2" (50mm)

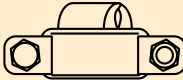
Hose mender

For connecting two hoses with the same diameter or repairing a damaged hose.

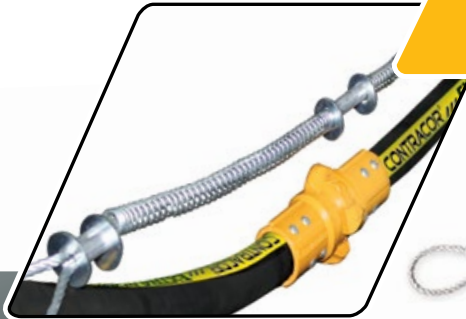
View	Order code	Description
	10150030	Hose mender, for hose I.D. = 1/2" (13mm)
	10150031	Hose mender, for hose I.D. = 3/4" (19mm)
	10150032	Hose mender, for hose I.D. = 1" (25mm)
	10150033	Hose mender, for hose I.D. = 1.1/4" (32mm)
	10150034	Hose mender, for hose I.D. = 1.1/2" (38mm)
	10150035	Hose mender, for hose I.D. = 2" (50mm)

Heavy duty double bolt clamps

For ensuring a tight seal and preventing leaks.

View	Order code	Description
	10150010	Hose clamp, for hose I.D. = 1/2" x (20-29 mm)
	10150011	Hose clamp, for hose I.D. = 3/4" x (28-34 mm)
	10150012	Hose clamp, for hose I.D. = 1" x (32-40 mm)
	10150014	Hose clamp, for hose I.D. = 1.1/4" x (39-49 mm)
	10150015	Hose clamp, for hose I.D. = 1.1/2" x (48-60 mm)
	10150016	Hose clamp, for hose I.D. = 2" x (60-76 mm)

Hose Safety Cables



Corrosion resistant steel cables with plated springs and aluminium ferrules



Instructions of use:

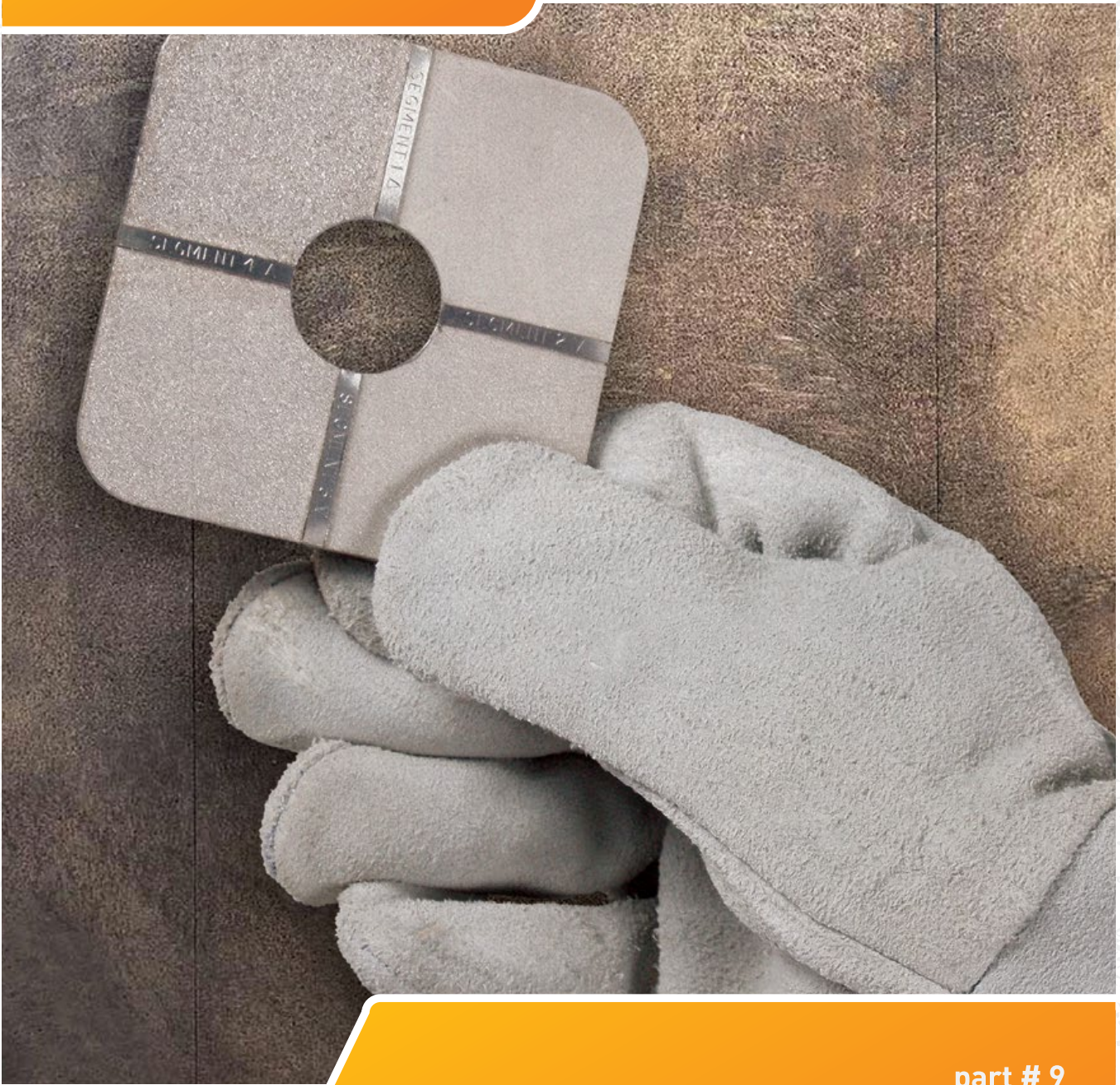
Attach blast hose safety cables at all coupled connections. Before connecting the couplings, pull back the spring-loaded loop, slip it over the blast hoses only (not the remote control lines). Connect the hose coupling and slide the ends of the safety cable back until the cable is straight and the hose is slightly bent.

Contracor® blast hose Whipcheck Safety Cables are used at all blast hoses for the safe holding of coupled connections in case of accidental separation. The Whipcheck Safety Cables relieve the couplings of the weight of the hose and reduce the danger caused by hose couplings failure. The Cables also help keeping the blast hose from whipping about in the event of a coupling failure. Hose couplings may separate from air and blast hoses for a variety of reasons:

- Coupling screws may lose their holding power due to internal wear on the hose tubing
- Use of improper coupling screws may interfere with the proper fit between couplings and hose
- Hose outer diameter may be too small for the coupling
- The continual strain caused by pulling hoses around job sites can weaken the coupling's grip on the hose
- Couplings can also have been damaged by vehicles or other equipment.

Whipcheck Safety Cables are strongly recommended by vertical applications, when air and blast hoses are suspended. Hose couplings are not designed to support the weight of the hose. Additional supports are required to relieve the added tension. Constructed of corrosion resistant, high strength steel, Whipcheck Safety Cables may be installed on hose-to-hose and hose-to-fixed coupling connections.

Order code	Description
10112321	Safety Cables up to 1" I.D.
10112322	Safety Cables 1.1/4" – 3" I.D.



part # 9

MEASUREMENT EQUIPMENT

Surface Roughness Comparator



GRIT

A precision nickel comparator plate which conforms to International Standard ISO 8503 for grit and shot blast surface roughness comparison measurement. Comparators allow the estimation of surface roughness by touch and sight. They are split into four sections, each with a different and defined roughness.

The grit version is split into sections equivalent to 25, 60, 100 and 150 microns.

SHOT

A precision nickel comparator plate which conforms to International Standard ISO 8503 for grit and shot blast surface roughness comparison measurement. Comparators allow the estimation of surface roughness by touch and sight. They are split into four sections, each with a different and defined roughness.

The shot version is split into sections equivalent to 25, 40, 70 and 100 microns.

Order code	Model	Description
10170510	SRC-GRIT	Surface Roughness Comparator, GRIT
10170500	SRC-SHOT	Surface Roughness Comparator, SHOT

Du har emnerne som skal afgrates. *Vi har løsningerne!*



***Kom med dine emner
til vores Test-center.***

I fællesskab finder vi den rette
brugbare løsning til opgaven.

Har du spørgsmål er du velkommen til at kontakte vores industri konsulenter

Sjælland

Muharrem Basaran

2819 2871

muharrem@pers-group.com

Jylland

Kontakt Hovedkontor

7582 6633

info@pers-group.com

Testcenter

Torben Pers

2819 2875

torben@pers-group.com